

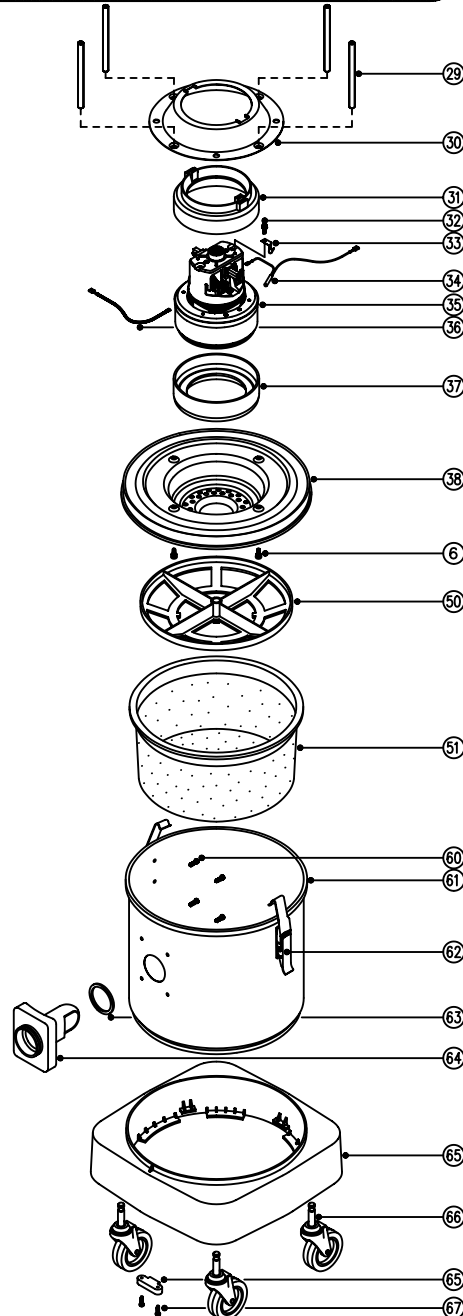
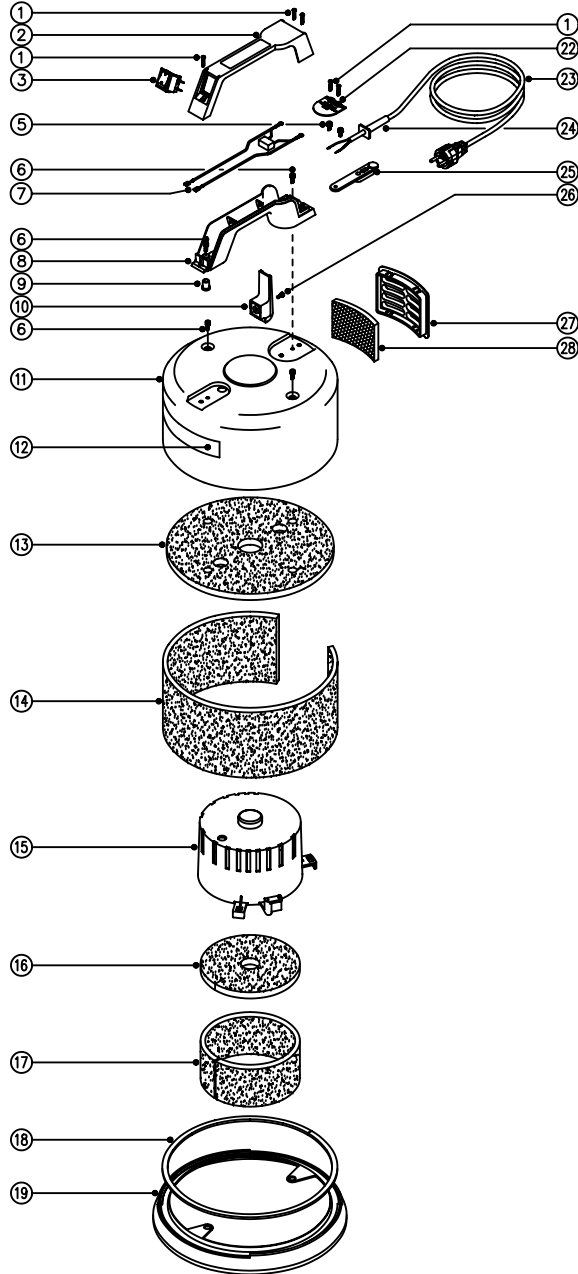


# Spare Parts

Model No. DBQ250 (BALCLEAN) (10 & 14 LITRE MACHINES)

Numatic, International, Chard, Somerset, TA20 2GB.  
Tel: 01460 68480 Fax: 01460 68560  
Sales - Tel: 01460 68600 Fax: 01460 68458

231815  
DRAWING:EXP341 ISS:03  
22/12/98



MODEL No. DBQ250 (BALCLEAN) (10 & 14 LITRE MACHINES)

## SPARE PARTS

POS.	PART No	DESCRIPTION
1	219107	No6 x 5/8" Long Plastite Screw
2	206213	Handle Cover
3	220286	Rocker Switch
4		
5	219090	M4 x 8mm Long Sems Screw
6	219047	M5 x 10mm Long Sems Screw
7	220142	230V Suppressor
8	320291	Handle Body Moulding
9	220061	Cable Bush
10	206006	Cable Hook
11	401257	Yellow Head Top
12	249200	Balclean Logo
13	203005	Top Felt
14	203009	Side Felt
15	229149	Noise Reduction Pod
16	203007	Felt Disc
17	203008	Side Felt Insulation
18	212052	Inseal (920mm Long)
19	202006	Buffer Ring
20		
21		
22	220131	Cable Clamp
23	220251	Mains Cable (C.E.E. Plug)
24	220132	Stress Relief
25	220164	Cable Strain Relief

POS.	PART No	DESCRIPTION
26	221151	M4 x 5mm Long Pozi Pan Machine Screw
27	225064	Outlet Grill
28	206260	Air Diffuser Pad
29	208009	102.5mm Long Aluminium Spacer
30	401260	Yellow Top Motor Housing
31	202066	Top Motor Gasket
32	219566	M4 x 6mm Long Pozi Pan Taptite Screw
33	219244	Overload Securing Clip
34	220704	230V Overload Assembly C/W Item 33
35	205032	230V Motor
36	320382	260mm Long White Link Wire
37	202065	Bottom Motor Gasket
38	401261	Yellow Bottom Motor Housing
50	209050	Filter Grid
51	207102	White Filter Assembly
60	219101	No8 x 1/2" Long Plastite Screw
61	300120	10 Litre Stainless Steel Container
61	300121	14 Litre Stainless Steel Container
62	206022	Small Claw Toggle
63	202027	Hose Flange Gasket
64	206024	Hose Connection Flange
65	225200	Snap-On Chassis
66	204060	3" Castor
67	219041	No8 x 3/4" Long Plastite Screw