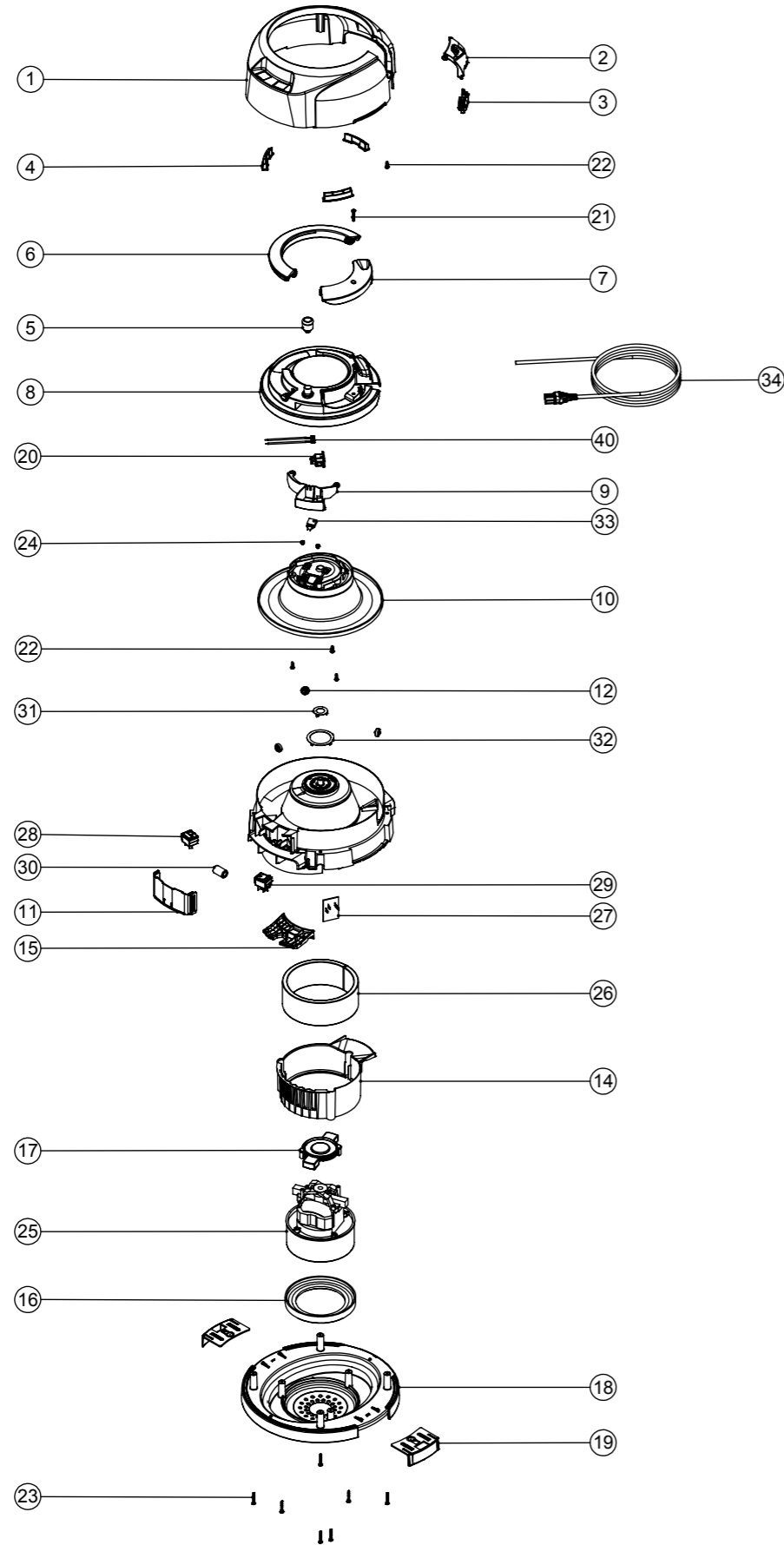


# Numatic International Spare Parts

## Model No: PPR (Autosave) Head Assembly - Exploded Drawing

NB: FOR WIRING SEE DRAWING: WD-0368

DRAWING: DRW-11762  
ISSUE: 02/12



# Numatic International Spare Parts

## Model No: PPR (Autosave) Head Assembly - Exploded Drawing

POS	ITEM NO.	DESCRIPTION	QTY.
1	237385	PPR - COVER	1
2	237395	PPR - CABLE COVER	1
3	237391	PPR - CABLE GUIDE	1
4	237386	PPR - CALLIPER	3
5	229617	CABLE REEL WINDER KNOB ASSY	1
6	237396	PPR - HANDLE	1
7	237390	PPR - REELER PLUG COVER	1
8	237387	PPR - REELER COVER	1
9	237388	PPR - SOCKET SADDLE	1
10	227447	CABLE REEL MOULDING ASSEMBLY	1
11	229623	SWITCH COVER (TWIN ROCKER SWITCH)	1
12	227436	ROLLER WHEEL	3
13	237129	TOP MOTOR HOUSING - PVR	1
14	229621	AIR GUIDE (TWIN ROCKER SWITCH)	1
15	237132	WIRE ENTRY ENCLOSURE - PVR	1
16	227882	TWO STAGE LAMB MOTOR BOTTOM GASKET	1
17	229614	MOTOR PLATE BI-MATERIAL	1
18	229618	BOTTOM MOTOR HOUSING (BI-MATERIAL)	1
19	229715	TOGGLE (TWIN SHOT)	2
20	230204	NUC18S INLET - VOLEX	1
21	291117	NO.8 x 1 INCH (4.5MM CAPTIVE) POZI-PAN SCREW / PLASTITE / BLACKODISED	1
22	219101	No8 X 1/2 INCH LONG POZI PAN PLASTITE SCREW	4
23	219104	"No8 X 1 LONG POZI PAN PLASTITE SCREW""	7
24	219090	M4 X 8MM LONG POZI PAN SEMS SCREW	2
25	205403	LAMB DAF MOTOR E13453-0	1
26	203020	NVQ/NQS POD SIDE FELT (LAMB MOTOR)	1
27	208100	AUTOSAVE 2 SPEED CONTROL PCB	1
28	221102	ROCKER SWITCH MOMENTARY ILLUMINATION	1
29	220582	GREEN ROCKER SWITCH	1
30	230097	AXIAL FERRITE BEAD	1
31	227141	INNER CONTACT RING	1
32	227142	OUTER CONTACT RING	1
33	230096	SUPPRESSOR	1
34	236155	CONNECTOR: NUC17S, CABLE: H 05V2V2-F BLACK, PLUG: UK 13A 3PIN	1
	236156	CONNECTOR: NUC17S, CABLE: H 05V2V2-F BLACK, PLUG: EUROPEAN 10A 2PIN	
	236157	CONNECTOR: NUC17S, CABLE: H 05V2V2-F BLACK, PLUG: SWISS 2PIN	
	236158	CONNECTOR: NUC17S, CABLE: H 05V2V2-F BLACK, PLUG: SOUTH AFRICAN 15A 3PIN	
	236159	CONNECTOR: NUC17S, CABLE: GTSA-2 V-75 N14586 BLACK, PLUG: AUSTRALIAN 10A 3PIN	
34	236160	CONNECTOR: NUC17S, CABLE: SJT (105°C) YELLOW, PLUG: CSA/USA 2PIN 15A	1
40	321681	85mm REELER LINK WIRE & SPADE	2